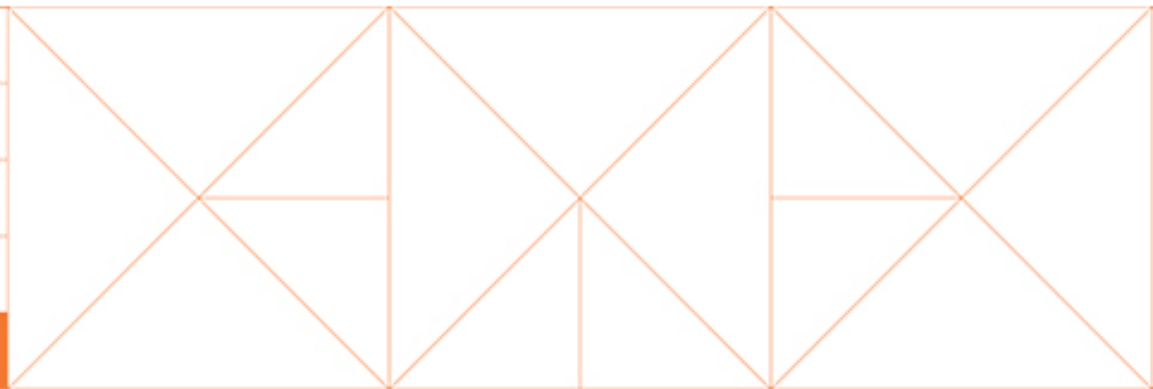


g e r a r
g e r a r
g e r a r
g e r a r
g e r a r



FAZ
DIFERENÇA
FAZER
PARTE

GERAR LEITE SUL 2016

Primíparas e Multíparas



Resultados Gerais\IA

Sul	2013		2014		2015\set		2015-2016	
Categoria	N=	P/IA 30d	N=	P/IA 30d	N=	P/IA 30d	N=	P/IA 30d
GERAL	6059	40%	11631	35%	6606	35%	7873	35%
Novilha	614	53%	2003	45%	769	54%	847	49%
Primípara	1228	34%	2025	36%	1018	39%	1905	38%
Múltipara	1923	36%	3491	36%	2349	31%	4354	31%
Não info	2294	43%	4112	29%	2470	30%	767	32%

O que fazer para melhorar???

Resultados por fazenda

(>100IA)

Fazenda	n=	P/IA 30d
15	473	15%
49	164	19%
54	122	25%
50	317	25%
31	143	27%
80	108	27%
75	261	28%
38	200	30%
11	241	30%
78	135	30%
17	103	31%
7	223	31%
12	103	32%
35	106	32%
55	233	32%
1	186	33%
36	269	34%
29	162	35%
68	101	36%
37	218	36%
23	213	37%
30	104	40%
20	194	41%
72	214	42%
73	254	42%
21	161	42%
13	148	48%
66	210	51%

Fazenda	n=	P/IA 30d
39	57	11%
69	71	21%
32	99	22%
25	47	26%
67	96	27%
47	85	28%
81	14	29%
71	38	29%
63	94	30%
26	85	31%
52	49	31%
4	62	32%
22	45	33%
24	35	34%
2	37	35%
58	28	36%
14	55	38%
16	23	39%
60	23	39%
51	10	40%
61	65	42%
74	27	44%
44	99	45%
43	17	47%
82	34	47%
59	19	47%
9	34	50%
65	87	51%
8	50	52%
45	43	53%
41	48	54%
70	56	63%
64	15	67%
42	13	77%

(<100IA)

Manutenção da Gestaçã

(<50P+)

(>50P+)

Faz	n=	P/IA
72	89	61%
7	69	75%
13	57	75%
11	67	76%
55	58	84%
20	66	85%
66	96	85%
21	59	88%
1	52	88%
73	97	89%
29	55	89%
23	75	89%
15	67	93%
36	90	98%
50	75	99%
37	79	99%
38	58	100%

Faz	n=	P/IA
14	20	60%
59	8	75%
43	5	80%
32	21	81%
9	16	81%
8	23	83%
54	23	83%
39	6	83%
67	18	83%
49	30	83%
68	30	83%
78	35	86%
31	36	86%
17	29	86%
45	16	88%
82	16	88%
44	35	89%
16	9	89%
60	9	89%
30	39	90%
65	10	90%
12	30	90%
41	23	91%
75	35	91%
63	27	93%
80	29	93%
4	20	95%
51	4	100%
81	4	100%
71	5	100%
69	7	100%
61	9	100%
22	10	100%
42	10	100%
58	10	100%
64	10	100%
70	11	100%
74	11	100%
24	12	100%
25	12	100%
2	13	100%
35	13	100%
52	15	100%
26	16	100%
47	23	100%

Faz	n=1ª	DEL 1ª	desp	DEL2ª	DEL3ª	Int1e2	int2e3	intMÉD	Serv	P/IA	PRENHEZ
51	3	76	22	169	378	93	209	151	14%	40%	6%
15	93	68	28	111	146	43	36	39	54%	15%	8%
67	33	104	66	150	214	46	64	55	38%	27%	10%
32	22	65	9	94	155	29	61	45	47%	22%	10%
74	14	102	43	194	270	92	76	84	25%	44%	11%
52	17	61	13	107	165	47	58	52	40%	31%	12%
25	20	70	29	104	156	34	52	43	49%	26%	13%
58	15	91	35	159	207	67	48	58	36%	36%	13%
49	14	66	17	100	126	34	27	30	69%	19%	13%
8	26	71	27	145	238	74	93	83	25%	52%	13%
60	13	87	47	176	209	89	33	61	35%	39%	14%
29	69	66	21	119	167	53	48	50	42%	35%	15%
24	16	70	37	160	167	90	7	49	43%	34%	15%
30	20	58	17	82	157	24	75	49	42%	40%	17%
7	73	61	47	100	134	40	34	37	57%	31%	18%
72	68	74	121	112	169	39	57	48	44%	42%	18%
63	13	60	8	87	127	27	40	34	62%	30%	19%
47	19	65	16	81	128	15	48	32	66%	28%	19%
54	10	67	32	77	121	10	44	27	78%	25%	19%
59	6	118	78	161	222	43	61	52	41%	47%	19%
12	15	53	17	74	123	21	48	35	60%	32%	19%
17	13	60	11	89	127	28	38	33	64%	31%	20%
42	7	97	28	176		79		79	27%	77%	20%
73	103	61	31	100	145	39	45	42	50%	42%	21%
50	49	93	47	105	144	12	39	25	83%	25%	21%
71	6	66	21	94	124	27	30	29	73%	29%	21%
4	13	64	10	92	127	28	35	32	67%	32%	21%
78	20	77	23	96	136	19	40	30	71%	30%	22%
9	14	53	22	103	148	50	45	48	44%	50%	22%
1	30	55	3	69	117	13	48	31	68%	33%	22%
11	40	78	20	101	133	23	32	28	76%	30%	23%
13	64	88	51	90	170	3	79	41	51%	48%	25%
20	66	112	76	115	175	3	61	32	66%	41%	27%
22	8	64	14	80	114	16	35	25	84%	33%	28%
21	26	54	2	75	117	21	42	32	67%	42%	28%
23	33	55	2	68	109	14	41	27	77%	37%	28%
68	21	65	21	76	118	10	43	26	79%	36%	28%
41	13	60	17	97	140	37	43	40	53%	54%	28%
43	8	111	104	123	165	12	42	27	78%	47%	37%
45	10	60	8	110	117	50	7	29	73%	53%	39%

Momento para 1ª IA (>20IA)

faz	a <60	b 61 a 83	c 84 a 120	d 121 a 200	e >=201	Total geral
55	3%	36%	61%	0%	0%	36
66	5%	14%	24%	28%	28%	78
11	13%	62%	21%	5%	0%	39
67	18%	24%	33%	18%	6%	33
78	20%	45%	30%	5%	0%	20
44	23%	23%	34%	11%	9%	44
20	23%	29%	20%	17%	12%	66
50	24%	35%	16%	20%	4%	49
14	26%	4%	9%	13%	48%	23
13	31%	33%	16%	16%	4%	51
25	35%	45%	15%	5%	0%	20
32	36%	64%	0%	0%	0%	22
29	38%	43%	17%	1%	0%	69
8	38%	38%	15%	8%	0%	26
15	39%	34%	24%	3%	0%	93
68	52%	38%	5%	5%	0%	21
30	55%	40%	5%	0%	0%	20
73	61%	24%	11%	3%	1%	103
72	66%	26%	4%	0%	3%	68
7	71%	11%	15%	1%	1%	73
1	97%	3%	0%	0%	0%	30
21	100%	0%	0%	0%	0%	26
23	100%	0%	0%	0%	0%	33

Momento 1ª IA (<20IA)

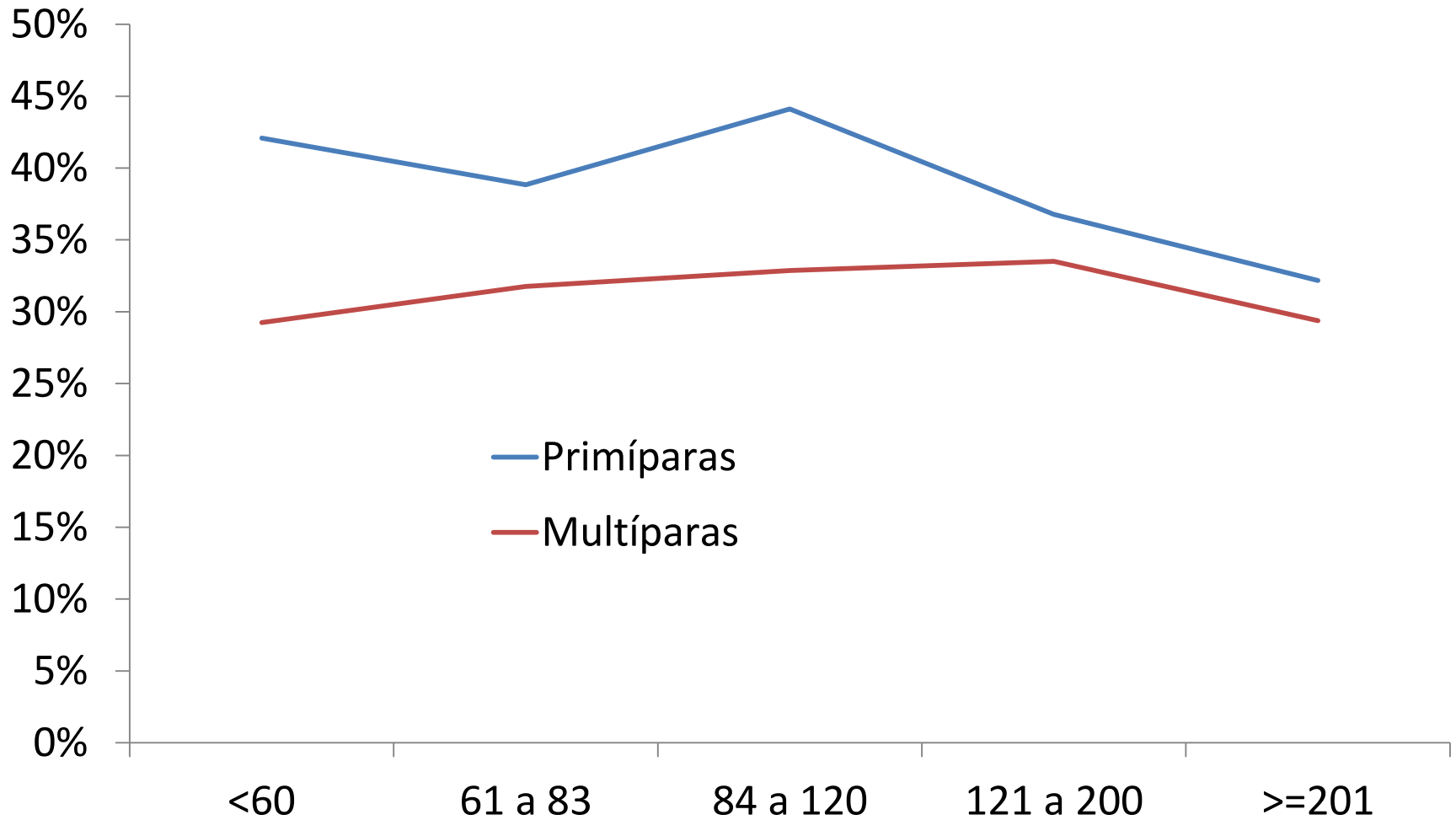
faz	a <60	b 61 a 83	c 84 a 120	d 121 a 200	e >=201	Total geral
42	0%	29%	43%	29%	0%	7
74	8%	38%	38%	8%	8%	13
60	8%	46%	38%	0%	8%	13
43	13%	63%	13%	0%	13%	8
59	17%	50%	0%	0%	33%	6
64	20%	7%	27%	33%	13%	15
4	23%	69%	8%	0%	0%	13
22	25%	63%	13%	0%	0%	8
58	27%	13%	53%	7%	0%	15
49	29%	50%	21%	0%	0%	14
51	33%	33%	33%	0%	0%	3
47	42%	47%	11%	0%	0%	19
24	44%	44%	6%	6%	0%	16
71	50%	33%	17%	0%	0%	6
52	53%	41%	6%	0%	0%	17
41	54%	38%	8%	0%	0%	13
17	54%	46%	0%	0%	0%	13
9	64%	29%	7%	0%	0%	14
63	69%	31%	0%	0%	0%	13
12	73%	20%	7%	0%	0%	15
31	78%	11%	0%	0%	11%	9
54	80%	10%	0%	10%	0%	10
45	80%	20%	0%	0%	0%	10

Momento para 1ª IA

cod faz	n=	<60	61 a 83	84 a 120	121 a 200	>=201
GERAR	1313	42%	30%	17%	7%	5%

- 28% das vacas estão sendo IA após 80 DPP
- Pontos a serem definidos:
 - Qual PVE?

DEL na P/IA por ordem



Faz	n=1ª	DEL 1ª	desp
23	33	55	2
21	26	54	2
1	30	55	3
45	10	60	8
63	13	60	8
32	22	65	9
4	13	64	10
17	13	60	11
52	17	61	13
22	8	64	14
47	19	65	16
49	14	66	17
41	13	60	17
12	15	53	17
30	20	58	17
11	40	78	20
71	6	66	21
29	69	66	21
68	21	65	21
51	3	76	22
9	14	53	22
78	20	77	23
8	26	71	27
15	93	68	28
42	7	97	28
25	20	70	29
73	103	61	31
54	10	67	32
58	15	91	35
24	16	70	37
74	14	102	43
60	13	87	47
50	49	93	47
7	73	61	47
13	64	88	51
67	33	104	66
20	66	112	76
59	6	118	78

É possível ter DP 1ª IA baixo?

faz	<60	61 a 83	84 a 120	121 a 200	>=201	n=
45	80%	20%	0%	0%	0%	10
1	97%	3%	0%	0%	0%	30
21	100%	0%	0%	0%	0%	26
23	100%	0%	0%	0%	0%	33

20	23%	29%	20%	17%	12%	66
43	13%	63%	13%	0%	13%	8
59	17%	50%	0%	0%	33%	6

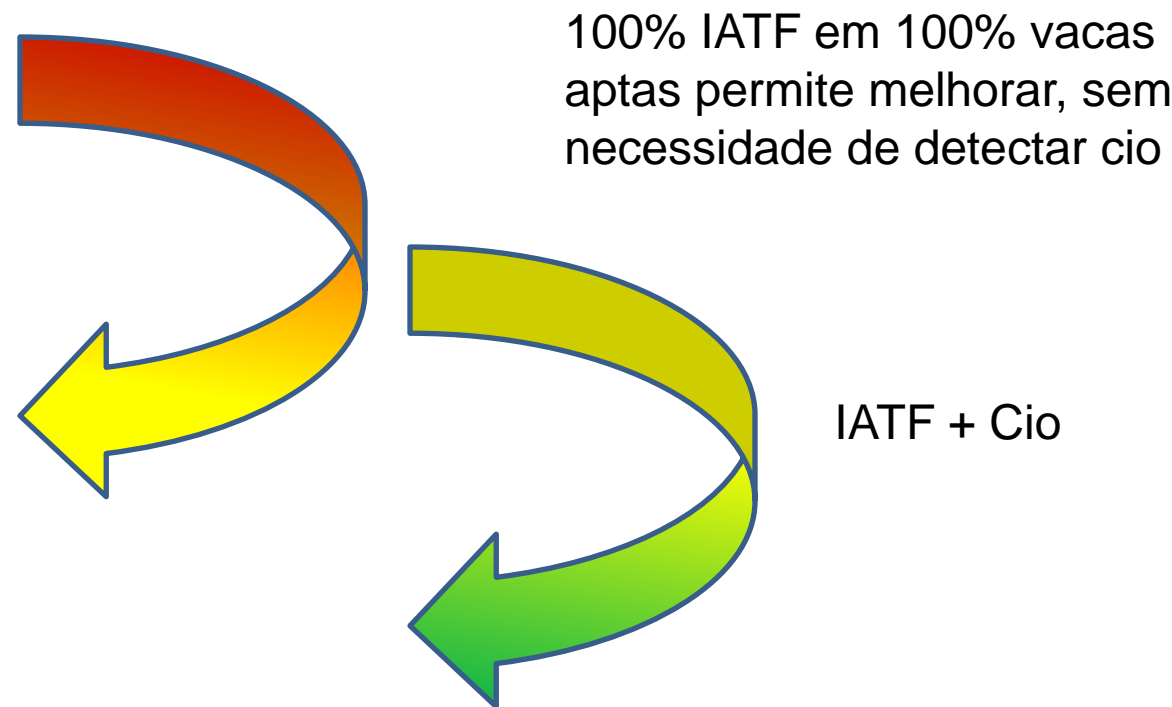
Sim – está associado ao momento em que as vacas recebem a 1ª IA

Estratégias para ter menor DP:

- Intervalo entre visitas
- % IATF na 1ª IA

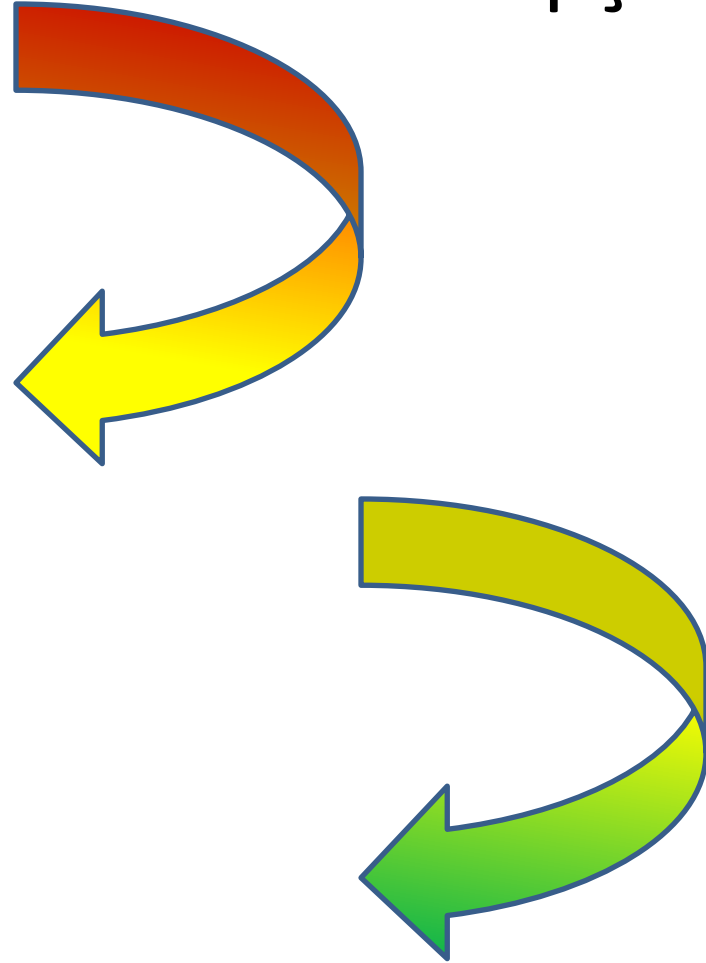
Faz	Serv	P/IA	PRENHEZ
51	14%	40%	6%
74	25%	44%	11%
8	25%	52%	13%
42	27%	77%	20%
60	35%	39%	14%
58	36%	36%	13%
67	38%	27%	10%
52	40%	31%	12%
59	41%	47%	19%
29	42%	35%	15%
30	42%	40%	17%
24	43%	34%	15%
9	44%	50%	22%
72	44%	42%	18%
32	47%	22%	10%
25	49%	26%	13%
73	50%	42%	21%
13	51%	48%	25%
41	53%	54%	28%
15	54%	15%	8%
7	57%	31%	18%
12	60%	32%	19%
63	62%	30%	19%
17	64%	31%	20%
20	66%	41%	27%
47	66%	28%	19%
4	67%	32%	21%
21	67%	42%	28%
1	68%	33%	22%
49	69%	19%	13%
78	71%	30%	22%
45	73%	53%	39%
71	73%	29%	21%
11	76%	30%	23%
23	77%	37%	28%
43	78%	47%	37%
54	78%	25%	19%
68	79%	36%	28%
50	83%	25%	21%
22	84%	33%	28%

Taxa de serviço

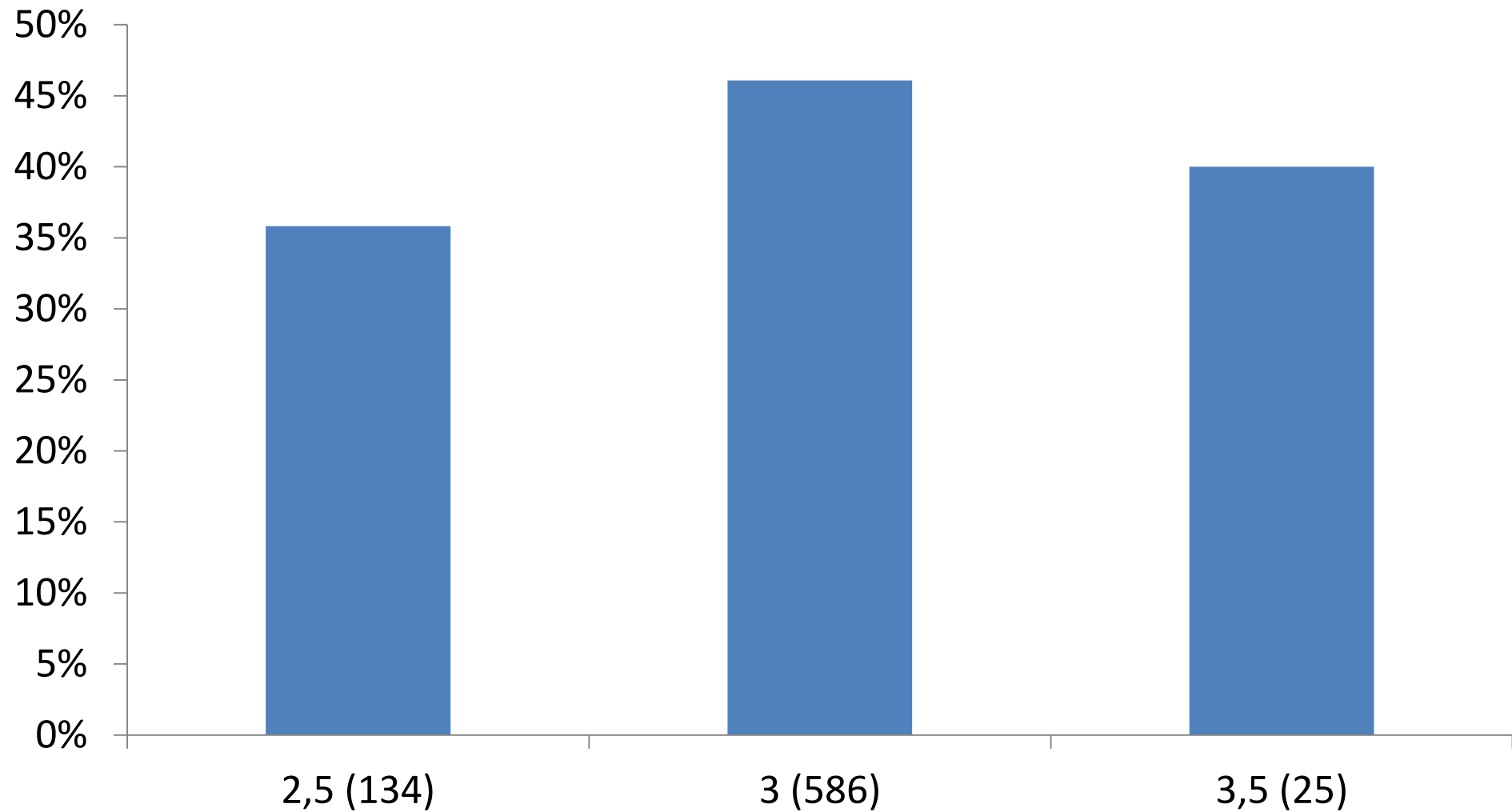


Faz	Serv	P/IA	PRENHEZ
15	54%	15%	8%
49	69%	19%	13%
32	47%	22%	10%
54	78%	25%	19%
50	83%	25%	21%
25	49%	26%	13%
67	38%	27%	10%
47	66%	28%	19%
71	73%	29%	21%
63	62%	30%	19%
11	76%	30%	23%
78	71%	30%	22%
52	40%	31%	12%
17	64%	31%	20%
7	57%	31%	18%
12	60%	32%	19%
4	67%	32%	21%
1	68%	33%	22%
22	84%	33%	28%
24	43%	34%	15%
29	42%	35%	15%
68	79%	36%	28%
58	36%	36%	13%
23	77%	37%	28%
60	35%	39%	14%
51	14%	40%	6%
30	42%	40%	17%
20	66%	41%	27%
72	44%	42%	18%
73	50%	42%	21%
21	67%	42%	28%
74	25%	44%	11%
43	78%	47%	37%
59	41%	47%	19%
13	51%	48%	25%
9	44%	50%	22%
8	25%	52%	13%
45	73%	53%	39%
41	53%	54%	28%
42	27%	77%	20%

É possível melhorar a Taxa de concepção



Efeito de ECC na P/IA



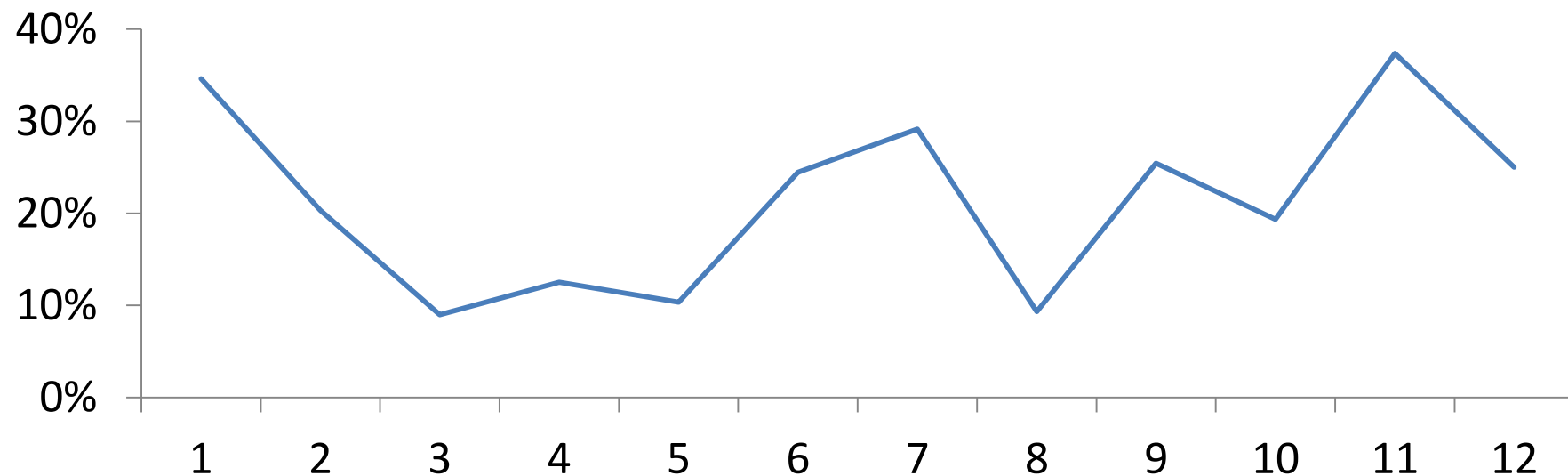
Efeito de raça e ordem

	Primípara		Multípara	
	n=	P/IA	n=	P/IA
.	38	53%	87	45%
HOL	1813	37%	4132	31%
JERSEY	47	62%	96	49%
Mestiça	7	43%	39	44%

Retenção de placenta na P/IA

Renteção	N=	P/IA
Não	937	44%
Sim	265	27%

% retenção por mes do parto



Quem deve ter melhor P/IA??

Primíparas ou multíparas

Por que?

	Retenção de placenta	Doença lactação	% <= 2,5 ECC	leite CL D 0	
Primípara	30%	15%	10%	27	93%
Multípara	18%	16%	22%	31	95%
Dif					

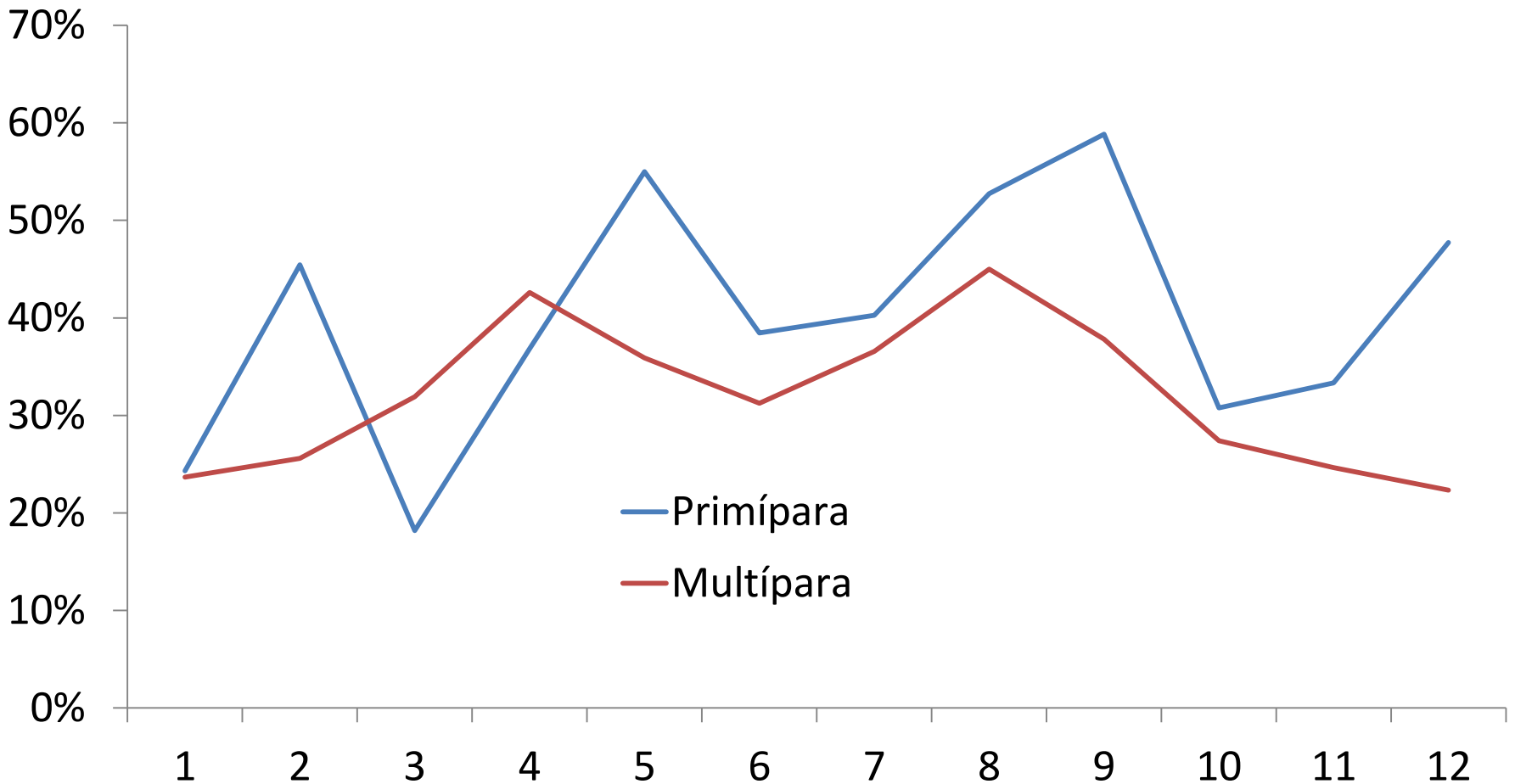
P/IA por ordem e fazenda

	Primípara		Múltípara		
	n=	P/IA	n=	P/IA	dif
42	5	60%	8	88%	-28%
64	4	50%	11	73%	-23%
13	26	35%	107	50%	-16%
78	61	25%	74	35%	-11%
45	15	47%	28	57%	-10%
26	32	25%	52	35%	-10%
68	46	30%	55	40%	-10%
11	80	25%	161	32%	-7%
54	29	21%	93	26%	-5%
69	6	17%	65	22%	-5%
52	24	29%	25	32%	-3%
12	42	33%	61	31%	2%
20	75	43%	119	40%	2%
15	209	17%	264	14%	2%
66	97	53%	113	50%	3%
82	6	50%	28	46%	4%
67	13	31%	83	27%	4%
47	19	32%	66	27%	4%
65	26	54%	61	49%	5%
16	10	50%	9	44%	6%
41	12	58%	36	53%	6%
80	29	31%	79	25%	6%
81	3	33%	11	27%	6%
49	56	23%	108	17%	7%
2	10	40%	27	33%	7%
22	13	38%	32	31%	7%
23	80	41%	133	34%	7%
7	68	37%	155	29%	8%
44	42	50%	57	42%	8%
32	40	28%	59	19%	9%
1	48	40%	138	30%	9%
73	57	49%	197	40%	10%
75	69	35%	192	25%	10%
55	50	42%	183	30%	12%
50	94	34%	223	22%	13%
25	18	33%	29	21%	13%
63	33	39%	61	25%	15%
72	45	53%	169	38%	15%
59	7	57%	12	42%	15%
29	45	47%	117	31%	16%
17	36	42%	67	25%	16%
8	6	67%	44	50%	17%
58	4	50%	24	33%	17%
70	19	74%	37	57%	17%
61	16	56%	46	39%	17%
14	20	50%	35	31%	19%
30	25	56%	79	35%	21%
43	3	67%	14	43%	24%
74	8	63%	19	37%	26%
4	7	57%	55	29%	28%
24	13	54%	22	23%	31%
35	33	55%	73	22%	33%
21	27	78%	134	35%	43%
31	31	61%	112	17%	44%
71	7	71%	31	19%	52%
60	5	80%	18	28%	52%
51	1	100%	9	33%	67%

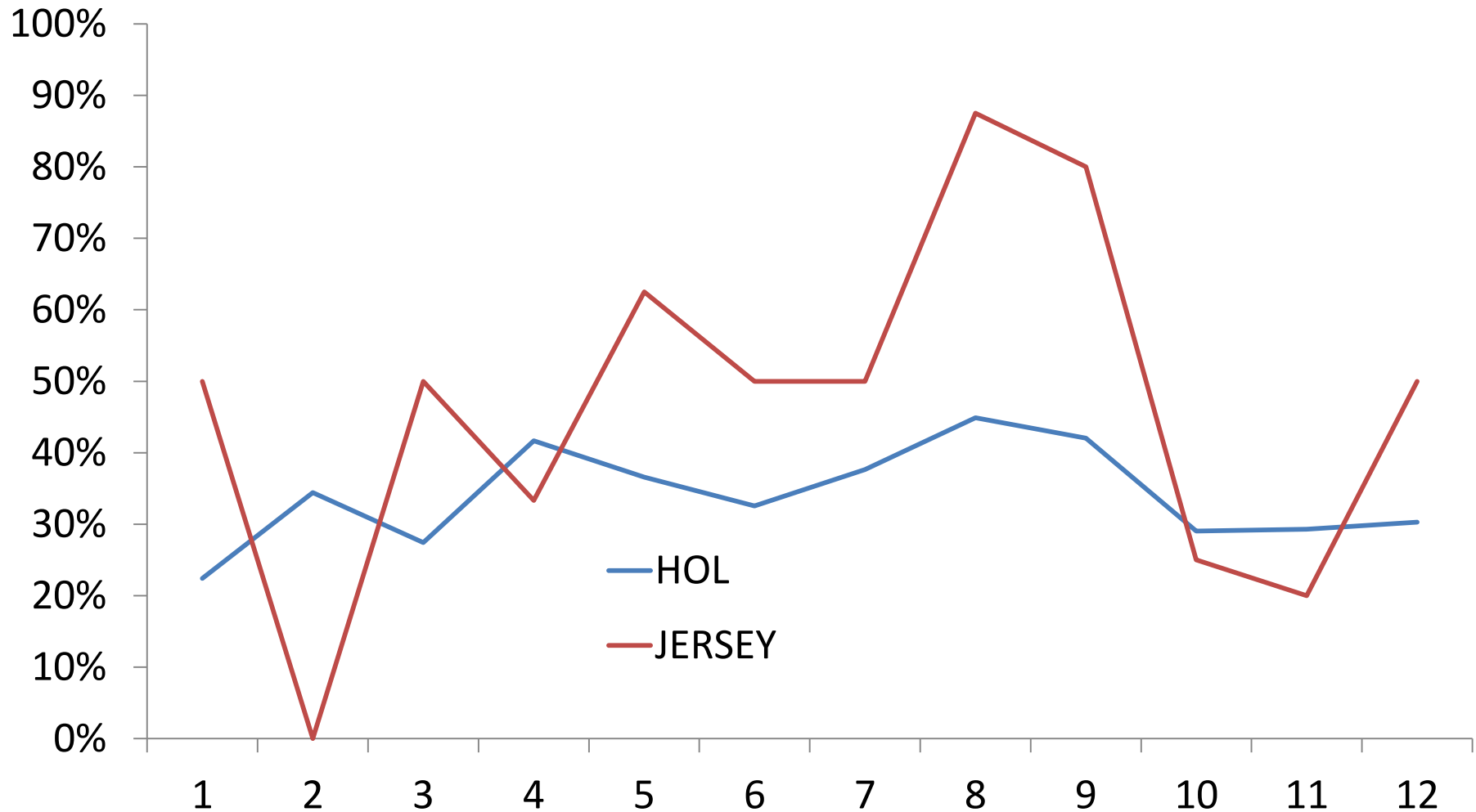
	Primípara		Multípara	
Doença na lactação	n=	P/IA	n=	P/IA
Não	241	55%	695	40%
Sim	44	31%	138	34%

Mês do parto na P/IA por ordem

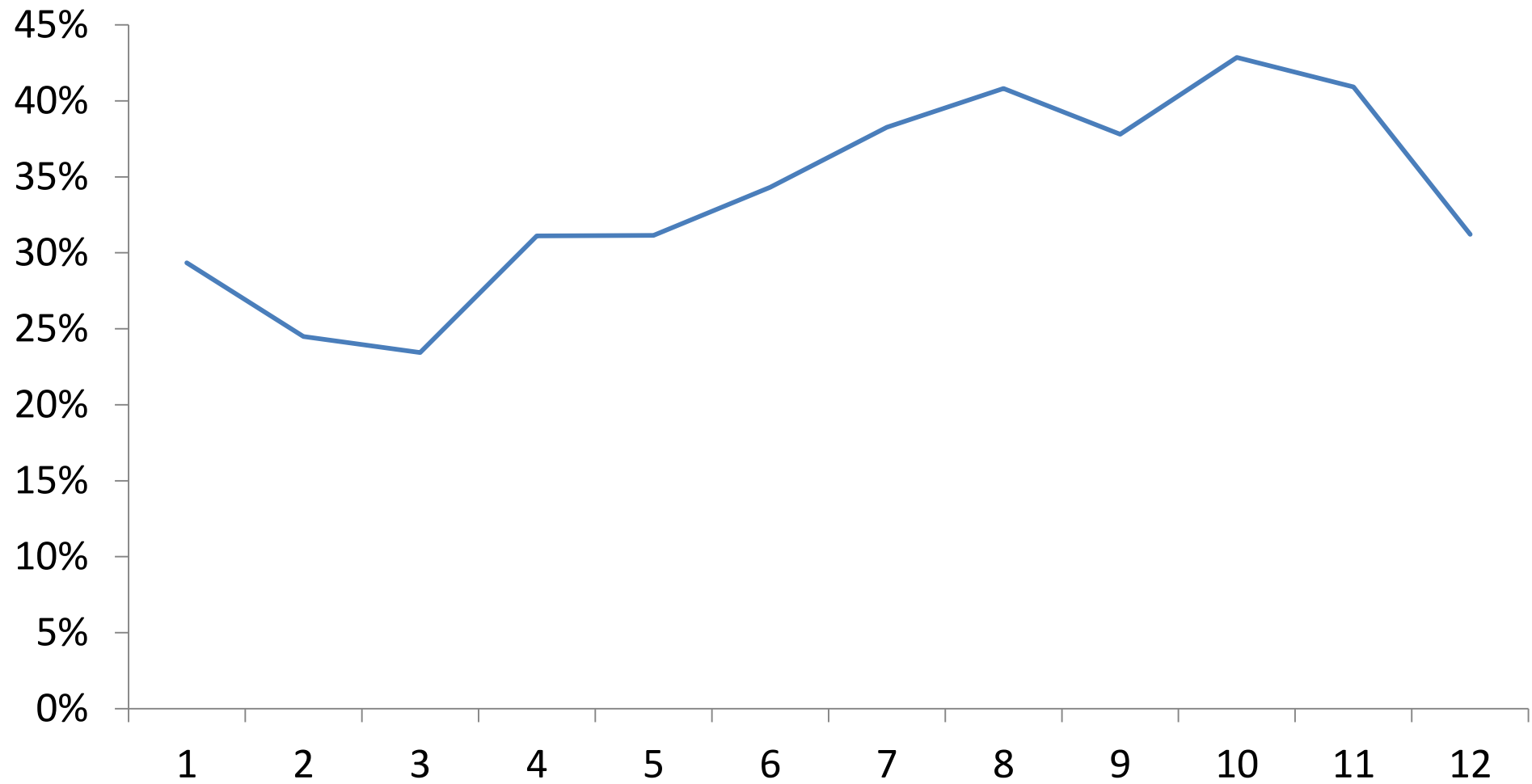
1ª IA



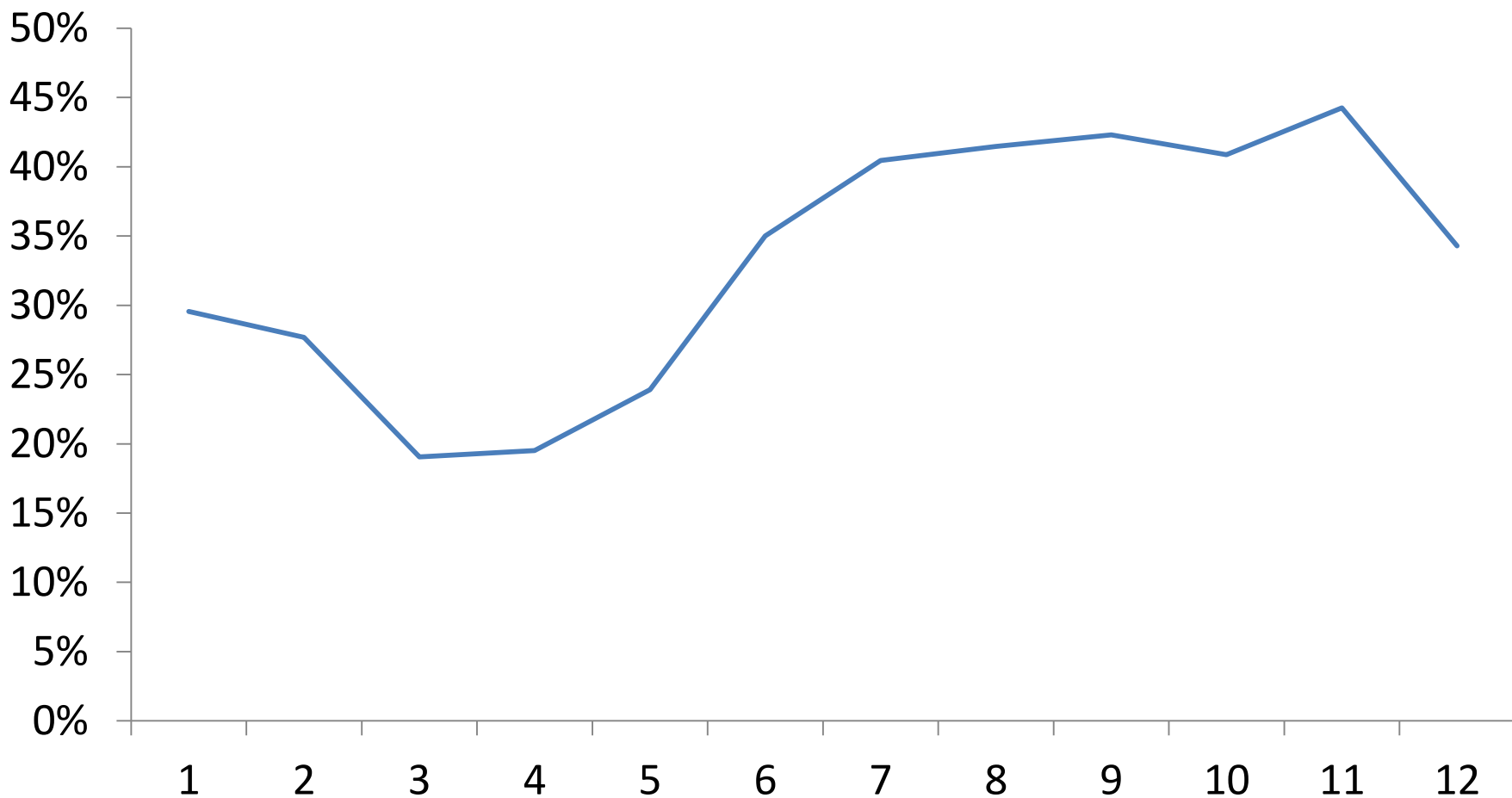
Mês do parto na P/IA 1ª IA



Mês da IA na P/IA



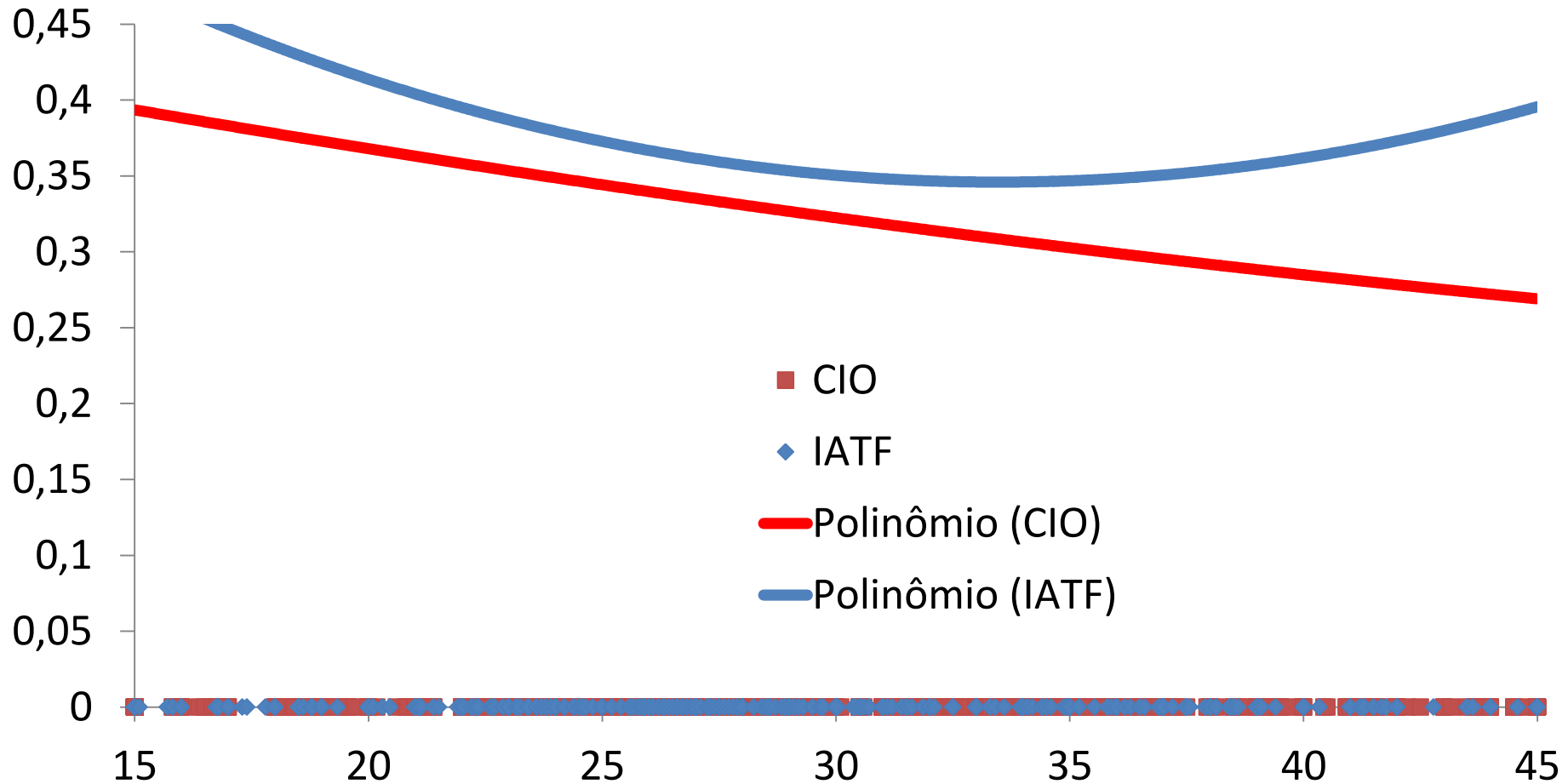
Mês da IA na P/IA 1ª IA



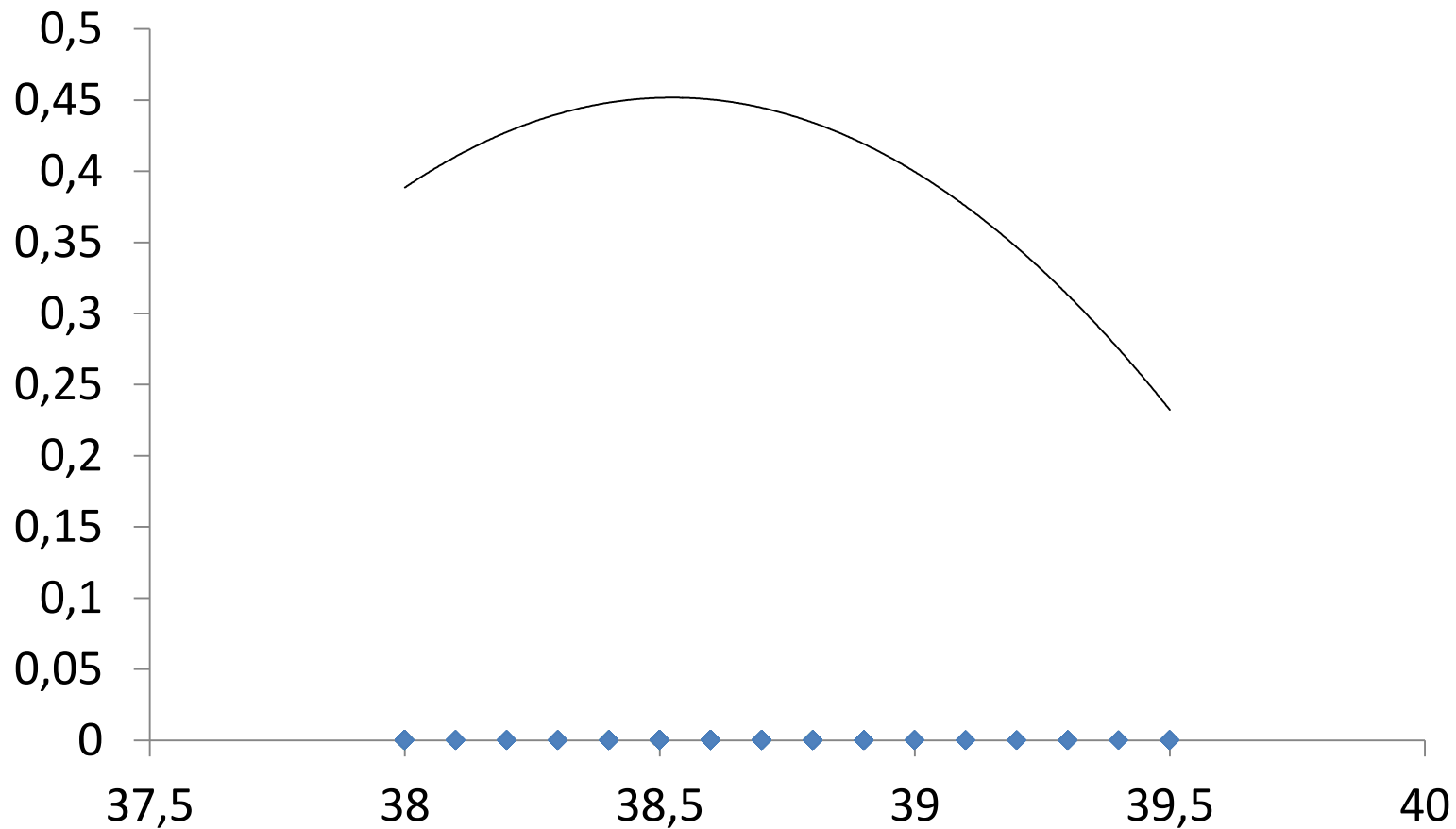
Cio ou IATF

	n=	P/IA
GERAL		
Cio	3177	37%
IATF	4685	34%
Holandesa		
Cio	3018	36%
IATF	3989	33%
Jersey		
Cio	95	52%
IATF	70	51%
Mestiça		
Cio	33	48%
IATF	13	31%

Cio vs. IATF vacas Holandesas por leite



Temperatura na P/IA



Nº USOS CIDR

	N=	P/IA
1	475	43%
2	307	41%
3	80	43%

CL início protocolo

	N=	P/IA
0	222	33%
1	1150	39%

Deu cío para IA

	N=	P/IA
0	69	29%
1	1405	39%

Tipo de semen

	N=	P/IA
Conv	2042	37%
Sexado	56	36%

Tipo de PGF

	N=	P/IA
Cloprostenol	2648	29%
dinoprost	1788	38%